

PART OF THE S.E.1/4, SEC. 34, T.6N., R.1W., S.L.B. & M.

EAST BENCH AT 29TH.

A PRUD

LOTS 5-6, 20-26 AMD. LOTS 1-4 & COMMON AREA, AMD. LOTS 16,17,26 & COMMON AREA D

IN OGDEN CITY
SCALE 1" = 60'

TAXING UNIT: 25

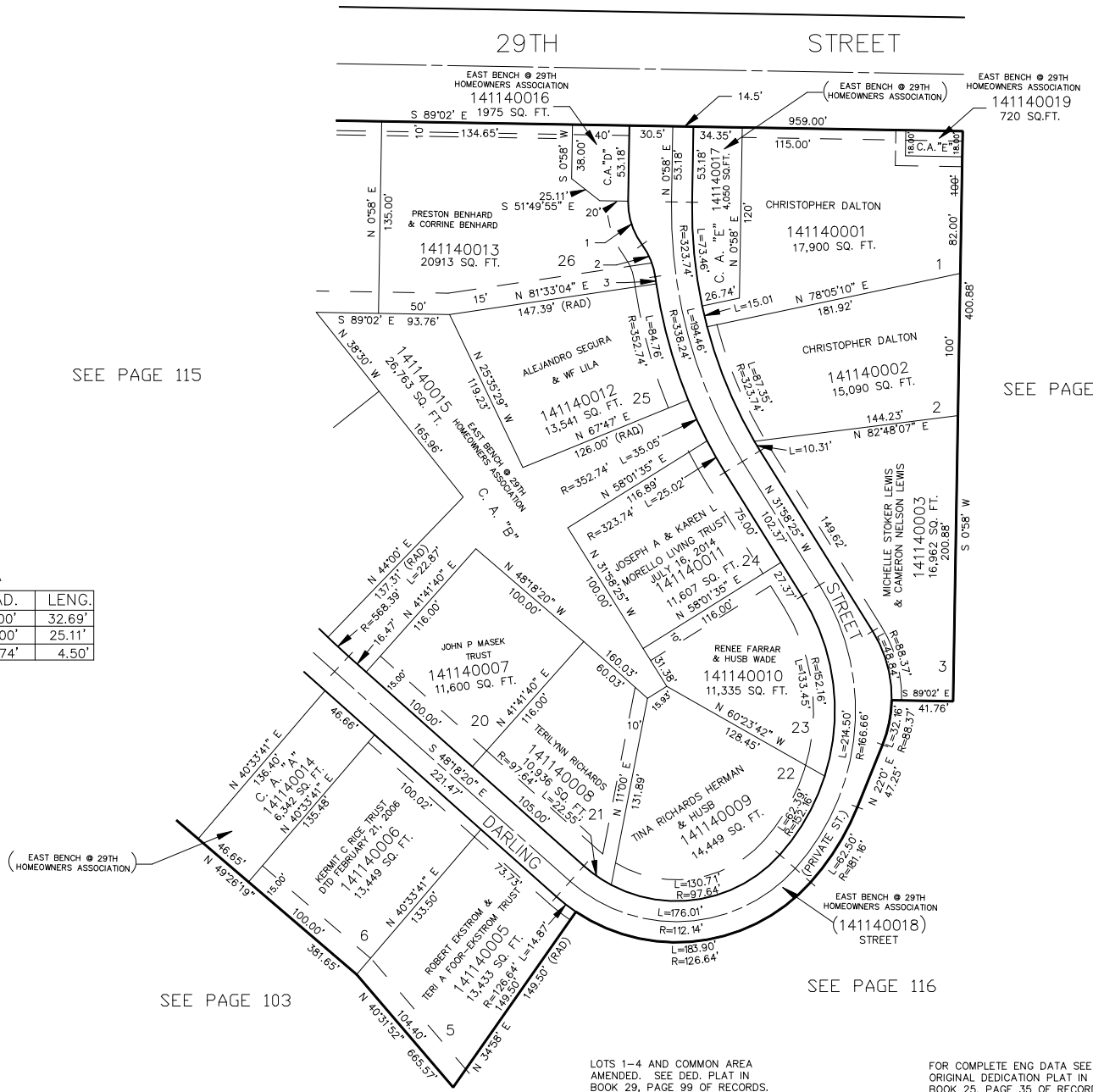
SEE PAGE 79

SEE PAGE 115

SEE PAGE 103

CURVE DATA

CURVE	RAD.	LENG.
1	50.00'	32.69'
2	50.00'	25.11'
3	352.74'	4.50'



7' UTILITY & DRAINAGE EASEMENTS EACH
SIDE OF PROPERTY LINES AS INDICATED
BY DASHED LINES EXCEPT AS OTHERWISE
SHOWN.

FOR TAX PURPOSES ONLY

LOTS 1-4 AND COMMON AREA
AMENDED. SEE DED. PLAT IN
BOOK 29, PAGE 99 OF RECORDS.

ESMT. VACATED 9-10-87 (1529 - 1412)

LOTS 16,17,26 AND COMMON AREA D
AMENDED. SEE DED. PLAT IN BOOK 38,
PAGE 61 OF RECORDS.

AMD. LOTS 16,17,26 SEE DED.
PLAT IN BOOK 42, PAGE 27
OF RECORDS.

FOR COMPLETE ENG DATA SEE
ORIGINAL DEDICATION PLAT IN
BOOK 25, PAGE 35 OF RECORDS.

AMD. LOT 1, OF THE AMD. PLAT
OF LOTS 1-4 AND COMMON AREA E
SEE DED. BOOK 42, PAGE 26
RECORDS.